



**Wakatipu**  
HIGH SCHOOL

# RECRUITMENT INFORMATION PACK

2024





Wakatipu High School is a bicultural school committed to the principles of Te Tiriti o Waitangi. We recognise and value all cultures at our school, and acknowledge the special position of Māori in New Zealand society. We work together with our Māori community to achieve the best environment for success for our ākonga.





## INFORMATION PACK

### CONTENTS

WELCOME FROM THE PRINCIPAL	4
2022 ACADEMIC SNAPSHOT	5
FUTURE FOCUSED	7
ĀKONGA PROFILE	8
TEACHING AND LEARNING	9
ORGANISATIONAL MODEL	10
OUR MODERN CAMPUS	12
SECONDARY EDUCATION IN QUEENSTOWN	14
COMMUNITY SUPPORT	15
POSITION DESCRIPTION: Teacher	16
HOW TO APPLY	18
USEFUL LINKS	18



# WELCOME FROM THE PRINCIPAL

## KIA ORA,

Thank you for expressing an interest in joining our extraordinary school and learning community.

Wakatipu High School's vision is to 'deliver Aotearoa New Zealand's best all-round education'. This aspirational vision challenges us to strive to deliver the very best possible opportunities and outcomes for all of our students each and every day.

Our Ākonga Profile outlines what we want for our students in their time at WHS, and encapsulates the all-round nature of our vision. The Ākonga Profile includes not only every student gaining their best possible qualification, but essential competencies and knowledge, and holistic development as a young person - underpinned by our school values of excellence, responsibility, resilience, inclusion and respect.

Integral to the Ākonga Profile and our vision is student learning, progress and achievement, and our strong academic results are testament to our success in this area. Students are also supported to achieve in vocational pathways, which include our Trades Academy, Gateway and Central Otago Youth Employment programmes. In addition, we provide learning support in literacy and numeracy, and have a Gifted Education programme.

A key part of our all-round education is the wide range of extra and co-curricular opportunities that we offer, including sport, arts, music, culture, outdoors, community and leadership. From our Winter Sports Academy and rowing, to our jazz band, school musical, Kapa Haka group and Duke of Edinburgh programme, our students have an incredible range of opportunities in which to participate and excel, as well as to grow and develop as young people. Furthermore,



the Wakatipu Basin and its unique environment enables us to offer our great outdoor education programmes.

Student engagement, wellbeing and resilience are also very important at WHS, and we work hard to support our students to enjoy coming to school, to 'feel good and function well' and to overcome challenges and obstacles. We have a comprehensive pastoral system, central to which are our five Houses.

Well-governed and very generously supported by the WHS Foundation and Branches Trust, Wakatipu High School is well on its way to delivering Aotearoa New Zealand's best all-round education for our students. We welcome you to join us at our remarkable campus and to 'reach for your heights' at this high performing school.

Ngā Mihi,

**ODED NATHAN**  
Principal

# 2022 ACADEMIC SNAPSHOT

We encourage and support our students to achieve their best possible qualification, and our NCEA Level 2 and University Entrance (UE) results over the past few years have placed us near the top of all co-educational schools in New Zealand.

Our teachers focus on great teaching and learning, including differentiated instruction, and also have a focus on 'high performance', which includes Merit and Excellence endorsements and Scholarships. We also have rigorous systems for monitoring and supporting students to achieve to their heights.

## STATISTICS

**1228**

STUDENTS

**126**

STAFF

## STUDENT ACHIEVEMENT 2022

**86%**

Year 11 achieved NCEA Level 1

**94%**

Year 12 achieved NCEA Level 2

**80%**

Year 13 achieved University Entrance

**57%**

Achieved Merit and Excellence Endorsements at Level 1

**54%**

Achieved Merit and Excellence Endorsements at Level 2

**21**

Scholarships







**OUR VISION IS TO  
DELIVER AOTEAROA  
NEW ZEALAND'S BEST  
ALL-ROUND EDUCATION**





# STRATEGIC PLAN

**Our Vision** is to deliver Aotearoa New Zealand's best all-round education.

**Our Motto** is Ad Alta - Reach for your heights, Kā Mauka Whakatipu

**The Values** that guide us are:

- > Excellence - *Panekiretanga*  
Striving to achieve our personal best, in everything we do.
- > Respect - *Te whakaute*  
For self, others, WHS, and the environment.
- > Responsibility - *Takohanga*  
Choosing our responses, and being accountable for our decisions, actions and consequences.
- > Resilience - *Te manawanui me te ū*  
Being able to cope with and grow from challenge.
- > Inclusion - *Kotahitanga*  
Actively welcoming and including all, and creating a safe environment.

Our strategic goals that we are working towards are:

## Students

- Engagement, learning, progress and achievement which enables every student to gain their best possible qualification and the school to maintain high levels of student achievement.
- Extracurricular opportunities for all students.

## Staff

- Recruit, develop and retain great staff.
- Deliver high quality teaching and learning.

## School

- Ensure a safe and inclusive environment.
- Develop a great school culture.
- Embrace biculturalism and mātauranga Māori.

## Community

- Engage with the community to enhance our all-round education.
- Communicate effectively with the WHS and wider community.





“

AT THIS KURA WE ARE EMPOWERED TO DISCOVER OUR PASSIONS AND PURPOSE THROUGH OUR CLASSES AND EXTRA CURRICULAR ACTIVITIES THAT HELP US TO UNLOCK AND CULTIVATE THE TRAJECTORY OF OUR FUTURE.

ANNIKA THORNTON,  
HEAD STUDENT 2023



## ĀKONGA PROFILE

Central to our vision to deliver Aotearoa New Zealand’s best all-round education is our Ākonga Profile. The Ākonga (Learner) Profile outlines the areas in which we want our students to learn, develop and grow during their time at WHS. The profile is very holistic and has four key areas:

- > WHS’s values - excellence, respect, responsibility, resilience and inclusion are at the centre of the profile.
- > Future-focused qualifications, transitions and pathway - including the best qualification possible for each student.
- > Capabilities for lifelong learning - including competency development and key knowledge, skills and processes.
- > Holistic development - including self, social and active citizenship.

Students in Year 9 experience the eight learning areas of the New Zealand curriculum and choose subjects which allow them to explore their interests while building the foundation

for success in the senior school. As students move through the school they become more specialised in their chosen subjects and pathway; with our broad range of subject choice for both seniors and juniors designed to meet students’ various interests and needs.

We also provide literacy and numeracy support, ESOL classes for second language learners, talent development programmes, separate scholarship support, extension and accelerated learning opportunities across the learning areas.

As per the Ākonga Profile, our students also learn and develop through our broader school-wide curriculum. An extensive extra and co-curricular programme, including sports, arts, cultural, outdoor education, community and leadership, as well as our vibrant House competition all provide important opportunities for our students to learn, grow and develop holistically.





# TEACHING AND LEARNING

Our team of talented, passionate and dedicated staff members are committed to ensuring there is high quality teaching and learning at WHS, including making the most of our school's Innovative Learning Environment (ILE).

Our teaching and learning framework outlines the guiding principles for high quality teaching and learning which are underpinned by research on what matters most for learners and their learning. These include:

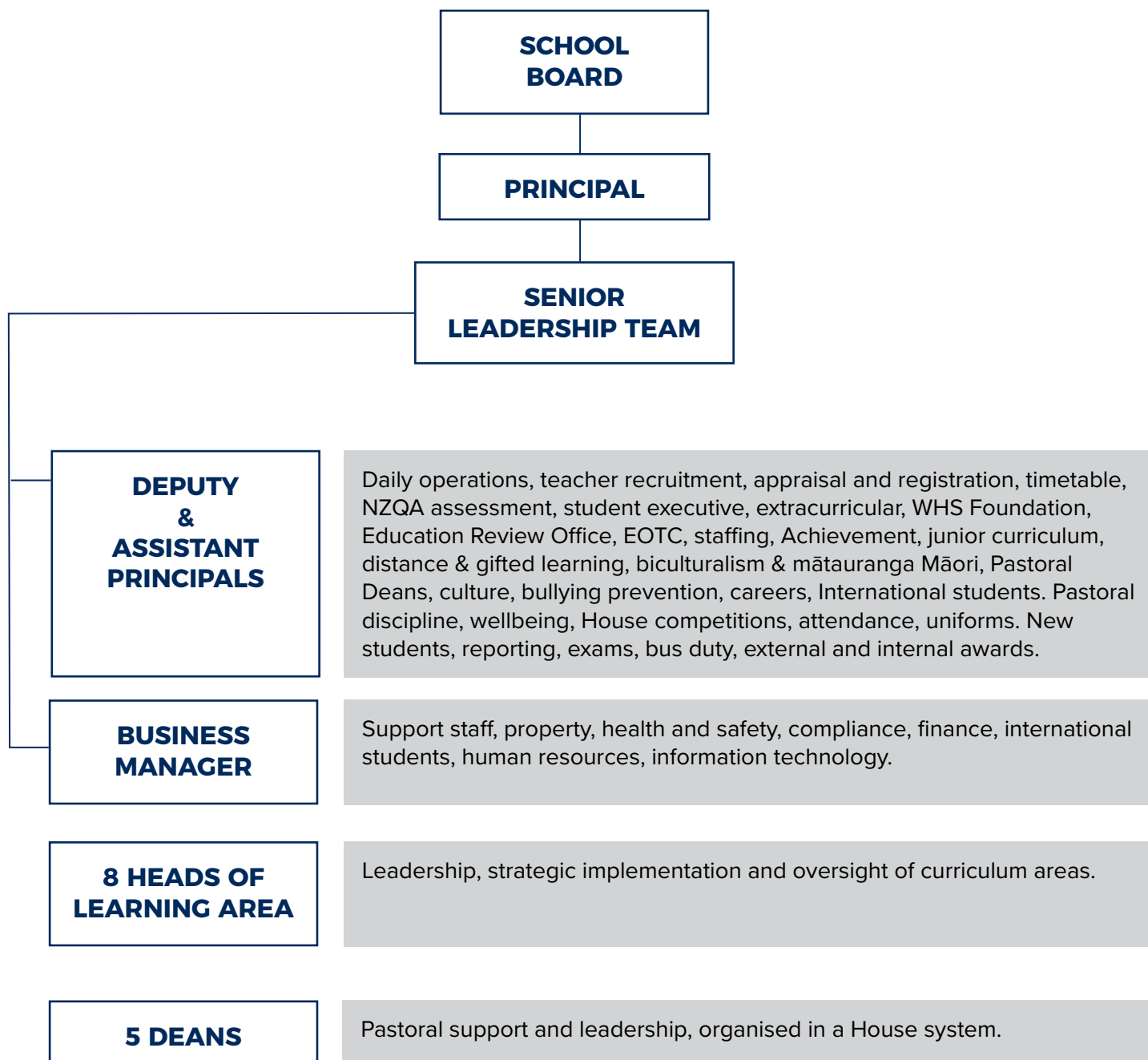
- > **Whakawhanaungatanga** - creating a class climate and culture conducive to learning;
- > **Wānanga** - growing great learners who love to learn and learn to learn;
- > **Kaitiakitanga** - high quality teaching for equity and excellence.

The school supports staff to engage in ongoing and up-to-date professional learning to ensure students receive world-class learning experiences.





# ORGANISATIONAL MODEL







**SOME OF THE MOST  
MEMORABLE SCHOOL  
DAYS AT WAKATIPU  
HIGH SCHOOL ARE  
THOSE SPENT ON  
SCHOOL CAMPS AND IN  
THE GREAT OUTDOORS.**



From Top to Bottom: 1. Arthur House at Participation Day 2. WHS Kapa Haka group Te iti o Tāhuna 3. Madeline Disbrowe winner of the U14 Girls Ski title in the Snow Sports Freeski Series 4. Students at Showquest competition 5. Year 9 kayakers on Kawarau River.





# OUR MODERN CAMPUS

## OUR CAMPUS

Wakatipu High School moved into a new school campus at Remarkables Park in early 2018. The new campus was designed and built in accordance with the principles of an Innovative Learning Environment (ILE), encompassing Flexible Learning Spaces as an integral part of learning.

Our modern facilities include two multi-purpose theatre spaces, 2 gyms, outdoor gym circuit, specialist learning spaces, purpose built science laboratories, a musical rehearsal and a recording studio.

The school is designed and built to accommodate 1800 students and is the only High School in the Wakatipu Basin.

## INNOVATIVE LEARNING ENVIRONMENT

WHS's Innovative Learning Environment (ILE) provides open, flexible learning spaces, which paired with technology, enable teachers to choose from a variety of pedagogical approaches to enhance teaching and learning. They support students to develop future-focused skills and competencies for lifelong learning, while engaging in a knowledge-rich curriculum.

The flexibility of our ILE enables teachers to deliver personalised learning, better meeting the needs of individual students. Personalised learning is supported through leveraging digital technology, with students bringing their own devices to school (BYOD) and using them as tools for learning.



“

WAKATIPU HIGH SCHOOL PROVIDES US WITH THE SUPPORT WE NEED TO MANAGE A CONSTANTLY CHANGING WORLD SO THAT WE CAN BUILD A BETTER FUTURE FOR OURSELVES AND OUR COMMUNITY.

LACHY BONIFACE, HEAD STUDENT 2023





# SECONDARY EDUCATION IN QUEENSTOWN



Year 10 students on their pre-Branches tramp up Queenstown Hill

OUR GOAL IS TO DEVELOP STUDENTS HOLISTICALLY. THIS INVOLVES PARTICIPATING IN OUR VIBRANT COMMUNITY AND LEARNING TO BE KAITIAKI OF OUR SPECTACULAR NATURAL ENVIRONMENT.

With a growing roll of 1337 students Wakatipu High School is the region's only secondary school. There are eight primary schools in the Wakatipu basin that cater for children in years 1-8. Our community and students are ethnically diverse and come from a broad socio-economic background.

The Queenstown community has expanded in recent years attracting residents from all over the world wanting to make it their home. With a culturally rich population, we pride ourselves in having teachers and support staff who offer a diverse set of capabilities and experiences for students to learn from.

Whilst academic achievement is the priority, the ability to turn the environment into learning opportunities is a unique and valuable asset for the school. We offer a fantastic Outdoor Education programme which makes the most of our lakes, mountains and pristine landscapes.

The natural and cultural environment that we live in is truly unique and the teaching and learning at Wakatipu High School reflects and embraces the special character of our slice of New Zealand.





# COMMUNITY SUPPORT

## WHS FOUNDATION

The WHS Foundation was established in 2013 to bring the community together to support the school in delivering a great all-round education. We are humbled by the fact that the Foundation has supported us with over \$1.65 million in that time, and very grateful for the generous support of many supportive community members and local businesses who have supported the Foundation and WHS.

The Foundation's support has provided funding for a range of initiatives including our Āwhina Support Fund, academic achievement, as well as leadership development and strategic

resourcing which have enabled us to successfully deliver a great all-round education to our students as we have progressed and grown.



The Foundation and the Wakatipu community which supports it, has a real and significant impact on our students and the school.

- > Learn more about the Foundation and their fundraising initiatives at [whsf.nz](http://whsf.nz)



## BRANCHES TRUST

Branches Trust was formed in 2009 to help fund our Year 10 Branches Camp. Thanks to their very generous support, the cost of this important camp has been kept down ever since for our families and students.

- > Learn more about the Trust and their fundraising initiatives at [branchestrust.co.nz](http://branchestrust.co.nz).



Above: School assembly at Te Kirikiri.  
Right and Top: Year 10 students at Branches Station



# POSITION DESCRIPTION: TEACHER

<b>Position:</b>	<b>Practicing Teacher</b>
<b>Responsible to:</b>	<b>Head of Learning Area/ Senior Leadership Team</b>
<b>Purpose:</b>	<b>Fulfil the code of professional responsibility and standards for the teaching profession as set out by the Teaching Council. Support students to fulfil all aspects of the WHS Ākonga Profile.</b>

## Key Responsibilities

Adhere to the Values that underpin the teaching Code and Standards as set out by the Teaching Council:

- > Whakamana: empowering all learners to reach their highest potential by providing high-quality teaching and leadership.
- > Manaakitanga: creating a welcoming, caring and creative learning environment that treats everyone with respect and dignity.
- > Pono: showing integrity by acting in ways that are fair, honest, ethical and just.
- > Whanaungatanga: engaging in positive and collaborative relationships with our learners, their families and whānau, our colleagues and the wider community.

## Code of Professional Responsibility:

1. Commitment to the teaching profession - Ko Te Ngākaunui Ki Te Umanga Whakaakoranga
2. Commitment to Learners - Ko Te Ngākaunui Ki Ngā Ākonga
3. Commitment To Families And Whānau - Ko Te Ngākaunui Ki Ngā Whānau
4. Commitment To Society - Ko Te Ngākaunui Ki Te Hapori Whānui

## Adhere to the standards for the teaching profession as per the Teaching Council:

1. Te Tiriti o Waitangi partnership: Demonstrate commitment to tangata whenuatanga and Te Tiriti o Waitangi partnership in Aotearoa New Zealand.
2. Professional Learning: Use inquiry, collaborative problem solving and professional learning to improve professional capability to impact on the learning and achievement of all learners.
3. Professional Relationships: Establish and maintain professional relationships and behaviours focused on the learning and wellbeing of each learner.
4. Learning-focused culture: Develop a culture that is focused on learning, and is characterised by respect, inclusion, empathy, collaboration and safety.
5. Design for learning: Design learning based on curriculum and pedagogical knowledge, assessment information and an understanding of each learner's strengths, interests, needs, identities, languages and cultures.
6. Teaching: Teach and respond to learners in a knowledgeable and adaptive way to progress their learning at an appropriate depth and pace.

For more details and for any updates to the above please refer to the Teaching Council.





**Comply and uphold the Professional Standards for Secondary Teachers as per Supplement 1 of the Secondary Teachers' Collective Agreement.**

Includes but not limited to standards of:

1. Professional Knowledge
2. Professional Development
3. Teaching Techniques
4. Student Management
5. Motivation of Students
6. Te Reo me ona Tikanga
7. Effective Communication
8. Support for and Co-operation with Colleagues
9. Contribution to Wider School Activities

**Comply with the policies and procedures of the Wakatipu High School Board of Trustees.**

*Note: The above statements are intended to describe the general nature and level of work being performed by people assigned to this classification. They are not to be construed as an exhaustive list of all responsibilities, duties, and skills required of personnel so classified. All personnel may be required to perform any reasonable and lawful duties outside of their normal responsibilities from time to time, as requested by their line manager.*



## HOW TO APPLY

Please submit your application online by visiting the following link: <https://wakatipuhs.schooljobs.nz/>

Applications will be electronically acknowledged, and further correspondence may be by email.

## USEFUL LINKS

### ABOUT US

- [wakatipu.school.nz/our-school](https://wakatipu.school.nz/our-school)

### STRATEGIC PLAN

- [wakatipu.school.nz/our-school](https://wakatipu.school.nz/our-school)

### ANNUAL PLAN

- [wakatipu.school.nz/our-school](https://wakatipu.school.nz/our-school)

### NEWS

- [wakatipu.school.nz/school-news](https://wakatipu.school.nz/school-news)

### SCHOOL CONTACTS

- [wakatipu.school.nz/our-staff](https://wakatipu.school.nz/our-staff)

### ERO REPORT

- [ero.govt.nz/institution/374/wakatipu-high-school](https://ero.govt.nz/institution/374/wakatipu-high-school)

### WHS FOUNDATION

- [whsf.nz](https://whsf.nz)

### BRANCHES TRUST

- [branchestrust.co.nz](https://branchestrust.co.nz)



Back cover: Our cultural pattern was designed by the Maui design studio in consultation with our Rūnaka, Ōraka-Aparima. The resulting work is a tāonga - a treasure for the school. The cultural pattern incorporates four key elements: Poutama (various steps of learning and achievement), Koru (growth), Manu Feathers (cultural diversity) and Manaia (representing kaitiakitanga/guardianship).





Wakatipu  
HIGH SCHOOL

Wakatipu High School  
47-49 Red Oaks Drive,  
Frankton, Queenstown 9300  
[office@wakatipu.school.nz](mailto:office@wakatipu.school.nz)  
03-442 7370  
[wakatipu.school.nz](http://wakatipu.school.nz)

: @wakatipuhighschoolqueenstown

: @wakatipuhighschool